

**ACCOSON**

 **MANUFACTURED  
IN THE UK**

## PRODUCT BROCHURE

Known for the accuracy and reliability of our products, ACCOSON™ provide high quality sphygmomanometers and stethoscopes for clinical professionals worldwide.



---

**THINK ACCURACY • THINK ACCOSON™**

---

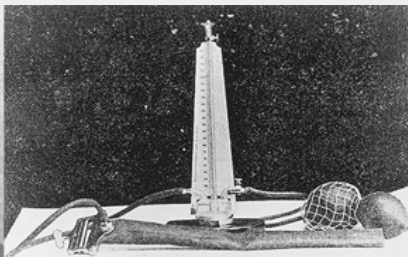


## ACCOSON™ Heritage

In 1904, ACCOSON™ produced their first glass manometer known as the sphygmomanometer. A year later, Russian surgeon Nikolai Korotkoff first described the technique to measure diastolic pressure.

Using a stethoscope, he identified blood flow sounds, known as “Korotkoff sounds” observed while a cuff is inflated and deflated.

Since then the basic principles of measuring systolic and diastolic blood pressure have remained unchanged. A long history of innovation from the origination of sphygmomanometers has made ACCOSON™ a market leader, with continued success in modern blood pressure measurement.



**Left:** Nikolai Korotkov

**Right:** Nikolai Korotkov's Sphygmomanometer

## Greenlight 300 Awards

Our newly developed type of manual sphygmomanometer, created to provide a reliable and accurate alternative to mercury devices, the current gold standard in blood pressure measurement:

1. A Department of Trade and Industry, UK award for the successful transfer of innovative technology. This was following the collaboration between AC Cossor & Son, the Regional Medical Physics Department of Freeman Hospital and the University of Newcastle in the UK
2. A UK National Health Service (NHS) Innovations North Special Exploitation Award for the innovation and successful development of a device for use in the NHS

# greenlight 300

## Stand Model fitted with Stand Conversion Kit

- A large container for the cuff and tubing on which the greenlight 300 is fitted
- Gauge set at an angle for easy viewing
- A mounting stem with adjustable height, with five castors for mobility and stability



The greenlight 300 has been developed to provide a reliable and accurate alternative to mercury devices. This is achieved using silicon chip technology replacing the traditional mercury column with an electronic pressure detection system.

Overcoming problems associated with other types of sphygmomanometer: The greenlight 300 is non-toxic, robust and importantly, automatically self-calibrates to zero when switched on, thus ensuring reliable accuracy.

The traditional mercury display is replaced with LEDs clearly displaying pressure in steps of 2 mmHg, and the clinically important cuff pressure deflation rate is indicated.

Shown to be compliant with the US standard for non-automated sphygmomanometers, ANSI/AAMI SP9:1994, and has been approved by the FDA (K040410). It has also been shown to be compliant with the European standards BS EN ISO 81060-1 and BS EN 1060-3.

Validated to the ESH International Protocol by the Mayo Clinic, the greenlight 300 is also sold as a test reference manometer for calibrating and checking aneroid devices – chosen by leading pharmaceutical companies for their testing services in the UK.

- 10 Year calibration warranty as standard
- Proven to be more accurate than mercury<sup>1</sup>
- Very long battery life of up to 170 hours
- Frequent calibration checks not required
- Displayed cuff deflation rate
- Latex free inflation system & coiled tubing
- Approved by the British Hypertension Society
- Available in green or white casing with desk, wall or mobile roll stand

Code	Product Description
0702A	GL300 Adult Ambidex Cuff
0709A	GL300 Large Adult Ambidex Cuff
1774	Stand Conversion Kit
1775	Protective Carry Case with Zipper

1. Graves JW et al. The Accoson Greenlight 300, the first non-automated mercury free blood pressure device to pass the International Protocol for blood pressure measuring devices in adults. *Blood Pressure Monitoring* 2003;9:13-7

## Six<sup>00</sup> Series of Aneroid Sphygmomanometers

**Our premium range of high quality aneroid sphygmomanometers.**

This robust product range is designed to last with an enhanced protective enclosure.

- Made in UK and guaranteed accuracy to ISO 81060-1
- Lightweight ABS cuff container which is very easy to clean
- New flexible shock mount resists any damage to the gauge
- Fine red pointer ensures consistently precise indication
- Desk model includes a carry handle
- Tough bright white ABS construction with built in carrying handle
- Range 0–300mmHg, with scale graduations from zero
- Supplied with a 3 year calibration warranty



Code	Product Description
0632A	Desk Six <sup>00</sup> with Adult Ambidex Cuff
0642A	Wall Six <sup>00</sup> with Adult Ambidex Cuff
0662A	Stand Six <sup>00</sup> with Adult Ambidex Cuff

## 6 Inch Series of Aneroid Sphygmomanometers

**Offering the clinician great quality at an affordable price.**

A modern solution for all locations with useful, practical features for users.

- Made in UK and guaranteed accuracy to ISO 81060-1
- Lightweight ABS cuff container which is very easy to clean
- New flexible shock mount resists any damage to the gauge
- Fine red pointer ensures consistently precise indication
- Range 0–300mmHg, with scale graduations from zero
- Tough bright white ABS construction with built in underlip handle
- Supplied with a 1 year calibration warranty



Code	Product Description
0332A	6 Inch Desk with Adult Ambidex Cuff
0342A	6 Inch Wall with Adult Ambidex Cuff
0362A	6 Inch Stand with Adult Ambidex Cuff

## Portable Aneroid Sphygmomanometers

Our portable series is a range of aneroid sphygmomanometers offering smaller, more lightweight devices which are the perfect transportable option for clinicians looking to aid patients across a variety of environments and settings.

This range of sphygmomanometers allow you to meet the requirements of each of your patients in almost any environment and situation. These are the perfect solution when on-the-go.

These portable aneroid (mechanical) devices don't use mercury but provide accurate results when calibrated correctly.

Each sphygmomanometer from this range is supplied complete with an ACCOSON™ ambidex cuff as well as a soft zipper case, helping to protect the device when in transit.

- Made in UK and guaranteed accuracy to ISO 81060-1
- Three variations available to ensure your requirements are met
- Range 0–300mmHg, with the scale graduations starting at zero
- Clear white face with fine pointer which allows for precise indication
- One handed use, suitable for both left and right hands
- Aneroid (mechanical), devices don't use mercury but provide accurate results when calibrated.
- Smaller, lighter and easily portable
- Fitted with Ambidex anti-microbial cuff, with our own unique soft edges
- The ideal option for use on-the-go
- Capable of withstanding 100% overpressure
- Supplied complete with a soft, black protective zipper case
- Duplex model available in standard black or as blue/red to allow for easy identification of department/user



Code	Product Description
0292A	Limpet with Adult Ambidex Cuff



Code	Product Description
0312A	Pocket with Adult Ambidex Cuff



Code	Product Description
0322A	Duplex with Adult Ambidex Cuff
0322AB	Blue Duplex with Adult Ambidex Cuff
0322AB	Red Duplex with Adult Ambidex Cuff

## Pressure Infusion Cuff

Our latex free infusion cuff is made to aid rapid IV infusion.

- Made in the United Kingdom
- Large scale accurate pressure gauge
- Gauge protector
- Strong fine mesh front
- Infusion cuff includes inflation bulb with a release valve
- Completely latex free
- Components available as spare parts



Code	Product Description
0210	1 Litre Pressure Infusion Cuff
0205	0.5 Litre Pressure Infusion Cuff

## Combine Self Test

Accurate aneroid sphyg combined with integrated stethoscope for self testing.

- Made in the United Kingdom
- Guaranteed accurate to ISO 81060-1
- One-handed use, suitable for right/left
- Range 0-300mmHg
- Includes integrated stethoscope
- Supplied in soft pouch case with latex free adult velcro cuff and bulb



Code	Product Description
400	Combine Self Test

## Single Patient Cuffs

Disposable blood pressure cuffs, for single patient use.

Support infection control in your clinic by utilising these single patient use cuffs.

Specifically designed for use with the ACCOSON™ sphygmomanometer range.

- Completely Latex Free
- Specifically designed as single patient use
- Cuffs are available in either single or double tube
- Suitable for use with all ACCOSON™ sphygmomanometers
- Supplied in a pack of 10 cuffs



Code	Product Description
1291SPU	Single Tube Infant (13.5–19.5cm)
1281SPU	Double Tube Infant (13.5–19.5cm)
1294SPU	Single Tube Child (18–27.2cm)
1284SPU	Double Tube Child (18–27.2cm)
1290SPU	Single Tube Adult (26–35cm)
1280SPU	Double Tube Adult (26–35cm)
1293SPU	Single Tube Lrg Adult (34.3–51cm)
1283SPU	Double Tube Lrg Adult (34.3–51cm)
1298SPU	Single Tube Thigh (40.6–66.5cm)
1288SPU	Double Tube Thigh (40.6–66.5cm)

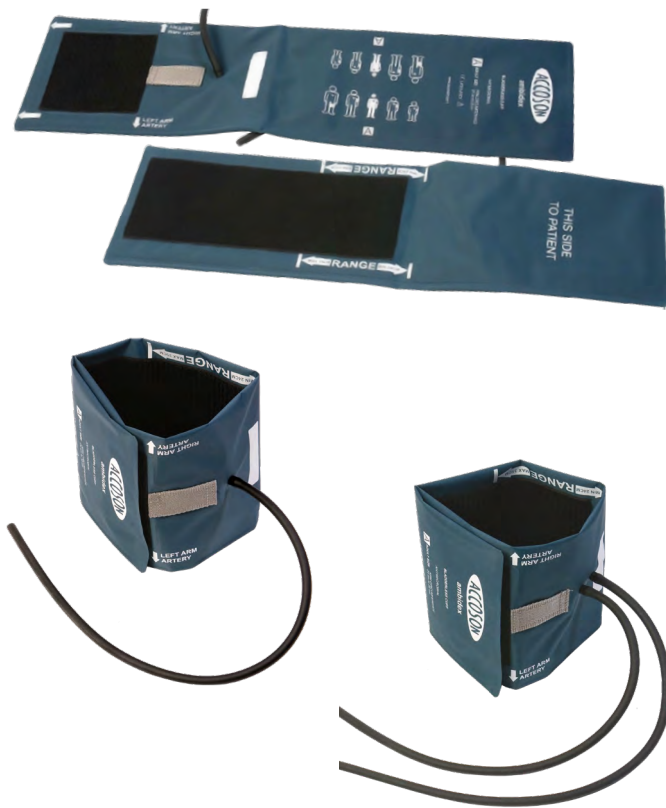
## Ambidex Innovative blood pressure cuffs

### One-piece cuffs developed to be easy to use, clean, multi-purpose and cost-effective

Features a unique soft edge which replaces the weld found on other cuffs, ensuring equal comfort for the patient.

These bladderless blood pressure cuffs can be used as a regular cuff, or for single patient use. Each carries a white panel on which a patient's name or the cuff location details can be recorded.

- Unique Ambidex comfort edge
- Cuff can be used on either left or right arm
- Inlet tube positioned in the centre of the cuff face frees space for the stethoscope and keeps tubing on the outside of the arm
- Cuff Range and artery position indicator can be read when cuff is on either arm
- Full range of sizes based on British Hypertension Society's recommendations
- Completely latex free
- Panel for single patient or cuff identification notes if required
- Tab for aneroid gauge, which can also be used as a tube tidy
- Easily cleaned and antimicrobial treated



Code	Product Description
1296	Single Tube Infant (13–19cm)
1286	Double Tube Infant (13–19cm)
1294	Single Tube Child (18–25cm)
1284	Double Tube Child (18–25cm)
1290	Single Tube Adult (24–35cm)
1280	Double Tube Adult (24–35cm)
1293	Single Tube Lrg Adult (34–46cm)
1283	Double Tube Lrg Adult (34–46cm)
1298	Single Tube Thigh (45–60cm)
1288	Double Tube Thigh (45–60cm)

### Cuff Sizing

Inappropriate cuff size can result in incorrect readings. Using a small cuff may result in erroneously high blood pressure readings, while a larger cuff may give out erroneously low blood pressure readings.

The inflatable part of the cuff should cover at least 80% of the circumference of the patient's upper arm. ACCOSON™ have a full range of cuff size variants available to order, we are also able to manufacture specialised cuff sizes on request.



## Cardiology Stethoscope

The Cardiology Stethoscope offers medical professionals one of the highest quality stethoscopes available on the market.

Manufactured from the finest stainless steel, with dual tunable diaphragm

- Made in the United Kingdom
- Adult and convertible paediatric chestpiece for optimum acoustic sensitivity
- Dual tunable diaphragm for monitoring high and low frequencies
- Extra adult bell for low frequency response
- The chestpiece is precisely machined to exacting tolerance from surgical stainless steel for outstanding performance
- Available in your preferred choice of three tubing colours
- Space alloy binaural assembly with dual lumen tubing
- Non-chill ring provides patient comfort
- Silicon soft-sealing eartips
- Overall length 700 mm.



Code	Product Description
CST-BL	Black Tube Stethoscope
CST-HG	Green Tube Stethoscope
CST-BR	Burgundy Tube Stethoscope

## Physician Stethoscope

Offering rugged durability combined with high acoustic response.

Our Physician stethoscope is the perfect choice for both hospital doctors and GPs.

- Made in the United Kingdom
- Superior acoustic response and rugged durability
- The chestpiece is precisely machined to exacting tolerance from surgical stainless steel for outstanding performance
- Available in your preferred choice of three tubing colours
- This stethoscope is supplied in a foam lined box with two extra sets of soft sealing eartips and one diaphragm
- Overall length 770 mm



Code	Product Description
PST-BL	Black Tube Stethoscope
PST-NB	Blue Tube Stethoscope
PST-BR	Burgundy Tube Stethoscope





## Nursing Stethoscope

**Our quality, lightweight stethoscope ideal for nurses.**

Offering an effective and elegant solution for all day-to-day nursing needs.

- Made in the United Kingdom
- Extra fine acoustic response and light design for extraordinary comfortable
- The adult chestpiece has been precisely machined to exacting tolerance from aluminium
- Double leaf internal spring binaurals are fixed at 15° angle for comfortable ear fit
- Available in your preferred choice of three tubing colours
- This stethoscope is supplied with an extra set of soft sealing eartips and diaphragm
- Overall length 770 mm

Code	Product Description
NST-BL	Black Tube Stethoscope
NST-NB	Navy Blue Tube Stethoscope
NST-BR	Burgundy Tube Stethoscope



## ACCOSON™ Stethoscopes

Our new stethoscopes complement our existing range of blood pressure measurement products.

These provide high acoustic sensitivity for exceptional performance, whilst delivering extreme comfort for you and your patients. Each stethoscope has unique features offering the very best the market has to offer.



# ESTABLISHED IN 1859

A long history of innovation from the origination of sphygmomanometers has made ACCOSON™ a leader in quality and accuracy with continued success in modern blood pressure measurement products.

The current range of ACCOSON™ products enjoy an excellent reputation for their quality and ease of use.



Our company accreditations include:

- EC Certification 93/42/EEC
- Registered Quality Assured firm under ISO13485:2016



V2.1

**ACCOSON™**

+44 (0) 1279 433456

[sales@accoson.com](mailto:sales@accoson.com)

[www.accoson.com](http://www.accoson.com)

A.C. Cossor & Son (Surgical) Ltd.  
Greig House, Annickbank Campus  
Annick Road, Irvine, Ayrshire  
KA11 4LF, United Kingdom